



ABN 23 039 013 724
Level 2, Building 8
Forest Central Business Park
49 Frenchs Forest Road East
Frenchs Forest NSW 2086

PO Box 652
Forestville, NSW, 2087
PH: (02) 9451 3455
FX: (02) 9451 3466
Email: info@dbce.com.au

Ref: 25074

19th June 2025

Sammy Hamilton
43A The Corso, Manly
New South Wales 2095

RE: Pedestrian Overbridge at Warringah Road, Forestville, NSW
DA For Continued Signage Use, Structural Feasibility and Safety Report

1.0 Introduction

This assessment has been conducted by Dennis Bunt Consulting Engineers Pty Ltd (DBCE) at the request of Keylan. No responsibility under the law of contract, tort or otherwise for any loss or damage is accepted.

The purpose of this assessment was to perform a structural and safety review of the existing sign at the Pedestrian Overbridge at Warringah Road, Forestville, NSW, for the DA approval by TfNSW for Continued Signage use.

The existing signage was inspected on the 27th of May 2025 as part of DBCE's ongoing maintenance inspections for JCDecaux.

The existing signage was documented by DBCE on the 18th of June 2025 for TfNSW, drawing number DS2025/000476, DA01(2).

The following documents were used in this assessment.

1. Transport Corridor Outdoor Advertising and Signage Guidelines, NSW Government (November 2017)
2. AS1170.0-2002 Structural design actions Part 0: General principles
3. AS1170.1-2002 Structural design actions Part 1: Permanent, imposed and other actions.
4. AS1170.2-2021 Structural design actions Part 2: Wind actions
5. AS4100-2020 Steel structures.
6. AS5100-2017 Bridge design.

7. AS1657-2018 Fixed platforms, walkways, stairways, and ladders - Design, Construction and installation

This report was limited to a visual examination only and no calculations were performed.

2.0 Observations/ Discussion

The existing sign is backlit landmark sign. The sign consists of a steel box that is fixed to one side of a steel girder footbridge located over Warringah Rd. There are steel frames that are welded to the top flange of the bridges steel girder and also bolted to the web of the girder. Horizontal rails are fixed to the frames. Z brackets are fixed to the back of the sign box and the Z brackets fit over rails connecting the box to the support frames. The sign face is 18m horizontal x 1.5m vertical. Refer to photo 1 to 6.

The sign box is located on the outside of the safety screen. Access to the sign box is from a hatch in the side of the safety screen. Refer to photo 7. There is a hatch in the top of the sign box and a permanent ladder inside the sign box underneath the hatch.

The sign box consists of steel structure on all sides of the box except for the front where a PVC banner is tensioned with ratchet straps. There are fluorescent lights fixed to the back of the box to illuminate the advertising sign at night.

When the banner is replaced, it is done from a walkway inside the box without having to stop the traffic below the sign. There is a horizontal cable running the length of the box that workers replacing the banner can fix their harnesses to. Refer to photo 8.

Safety cables to stop the boxes falling onto the road during vehicle impact have also been installed. Refer to photo 3 to 5.

3.0 Recommendations/ Conclusions

- The sign box is in accordance with the relevant Australian standards and Transport Corridor Outdoor Advertising and Signage Guidelines, NSW Government (November 2017)
DBCE note there are safety cables fixed to the rear of the box and the bridge to prevent the sign box falling onto traffic should it be impacted by vehicles in accordance with Section 1.2 e of the guidelines.
- The steel frames connecting the sign box to the bridge are generally in good condition with some minor surface corrosion. Refer to photo 5 and 6.
The sign box is also generally in good condition with some minor surface corrosion. Refer to photo 8.
There was however significant corrosion in one of the horizontal SHS members in the top of the box at the central splice location in the boxes steel frame. The corrosion was located near the banner where the forces are less than the back of the box as the structural members cantilever from the back of the box. Refer to photos 9 and 10.

There was also some surface corrosion in the bottom members near the splice location. Refer to photo 11.

- The sign box is rated as category 3 by DBCE. ie Moderate damage, excessive or widespread corrosion. Rectified and re-inspection required within 8 months.
 1. The corrosion should be removed with a mechanical wire brush.
 2. Steel compensating plates should be welded over the area where there is a loss of section.
 3. The joint in the cladding over to be correctly sealed.This information will be provided to JCDecaux along with the category 3 rating for rectification within the 8-month period.
- There are presently no safety issues requiring fixing.

If you have any questions, please do not hesitate to ring the undersigned on 0400 023 714

Yours Faithfully,



John Linsell BE(Hons), MIEAust, CPEng, NPER(Struct)
for Dennis Bunt Consulting Engineers Pty Ltd.



Photo 1

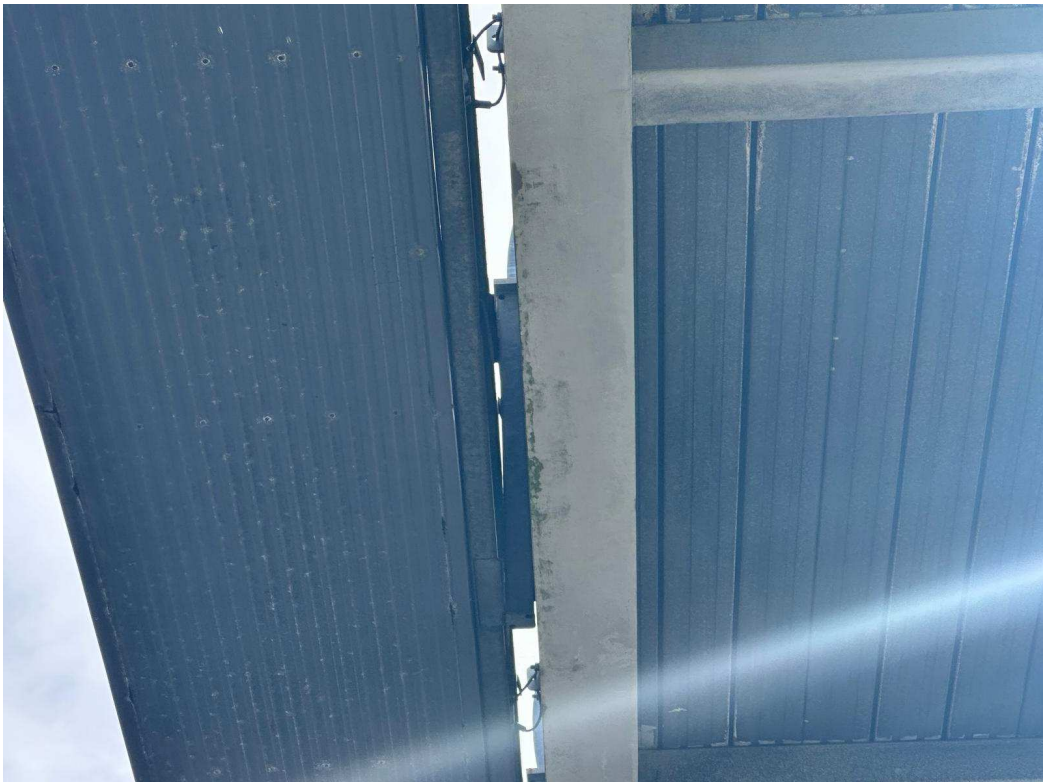


Photo 2



Photo 3

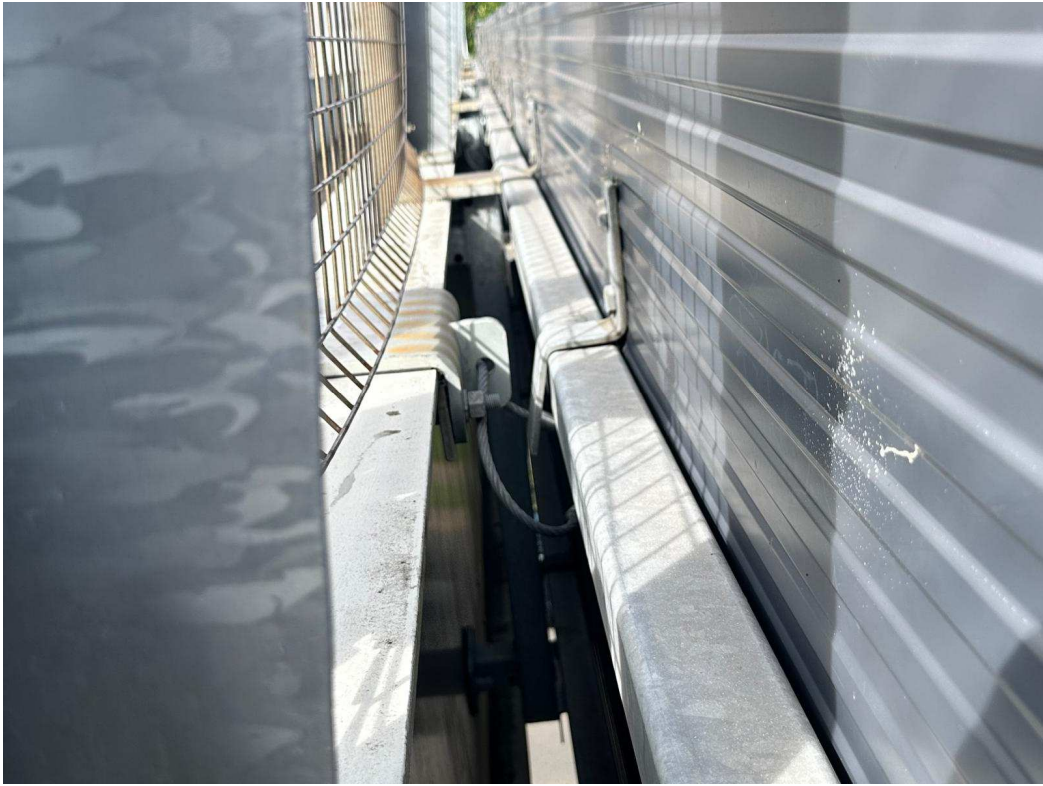


Photo 4



Photo 5

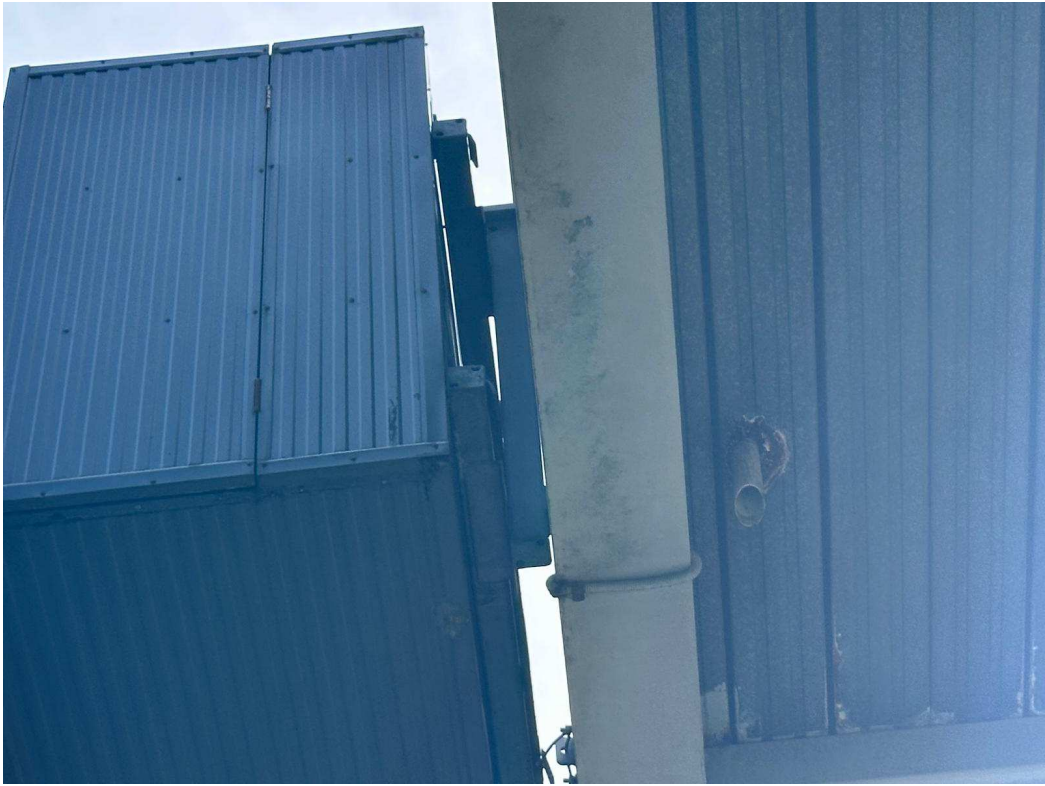


Photo 6



Photo 7



Photo 8

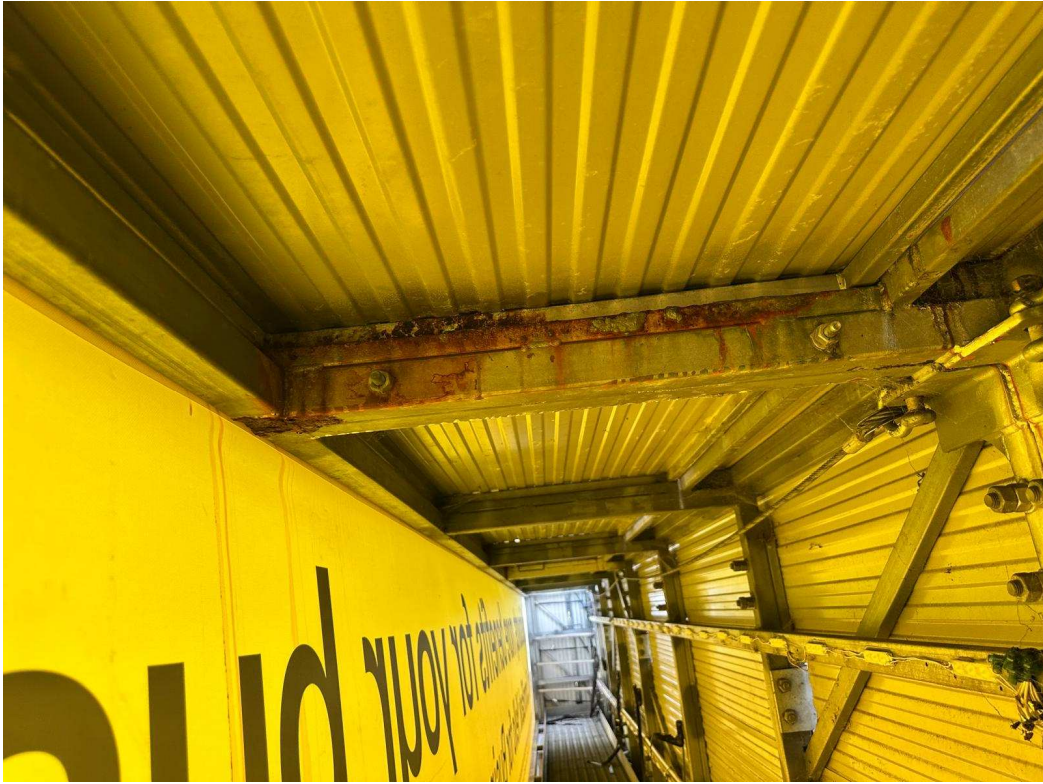


Photo 9

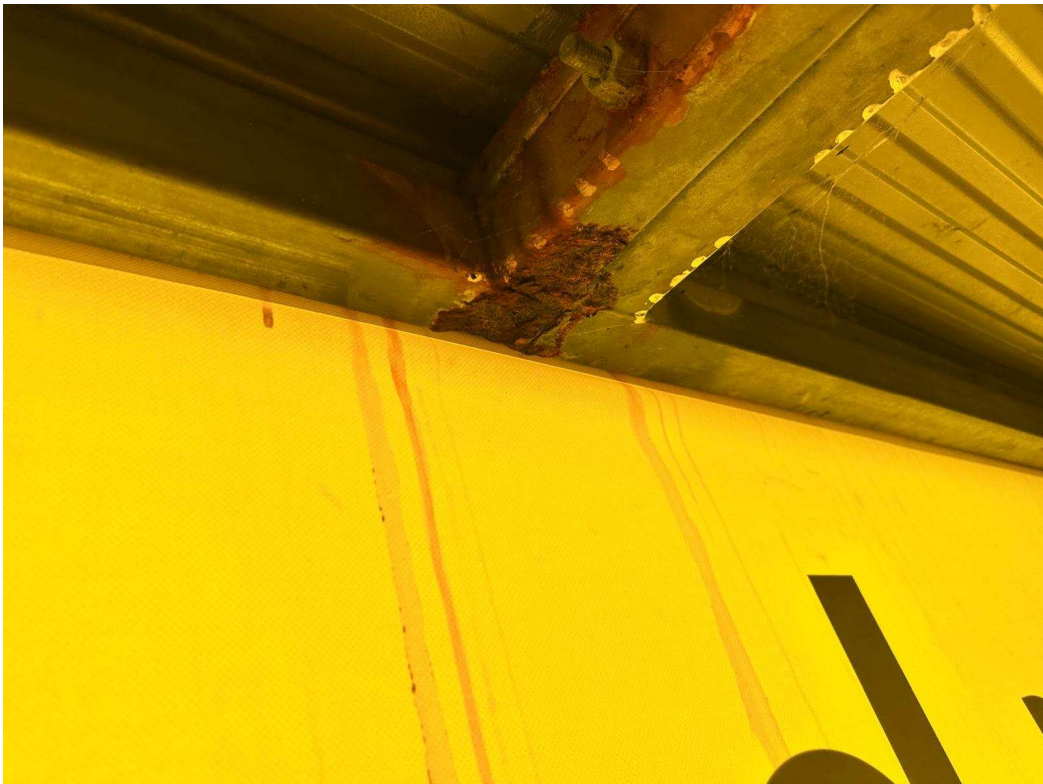


Photo 10



Photo 11